

ROCHESTER HISTORICAL & PIONEER SOCIETY INC

**Volunteers are not paid,
not because they are
worthless but because
they are priceless.**

Issue 26 APRIL 2020



This Edition

Page 1 Rochester Car Club visit Rochester Historical Society Museum

Page 2 Presidents Report, Local History, 1960 Cricket Premiers.

Page 3 June 1960 start of Eppalock Reservoir

Page 4 Plan of the Eppalock Dam Construction

16 Members of the Rochester Car Club enjoyed morning-tea at the Rochester Historical Society Museum



Presidents Report April 2020

Dear Friends, the executive of the Rochester Historical & Pioneer Society have met and discussed the present Federal Government directive to try and contain the spread of the coronavirus, and as a result we will be temporarily closing our Museum Complex in High Street Rochester to the Public as from Monday 23 March 2020. Our research team will continue to work on any enquiries by internet and phone. Our monthly committee meetings will not be held till further notice. We look forward to having our Museum open and fully functional soon. In the meantime please take care and stay safe till this history making pandemic is under control.

Lorraine Haines. *President*

Fanny Isabella Nicol part of our local History



Fanny Isabella Nicol was born in the Ballarat area in 1884 the second youngest of the children of John Nicol and Flora Macfarlane who married in 1872. Later John and Flora moved to land they held at Ballendella north west of Rochester. The farm was called "Tower Farm "because of a 120-foot log tower that was built and used by the early surveyors. Fanny trained as a nurse in Sale and passed her exams in 1915. Fanny was living at Tower Farm when she was accepted for service in August 1917. She embarked in Melbourne on the 31st August on the "Wiltshire" for Suez serving at the General Hospital Alexandria and the General Hospital Abbassia. Fanny returned to Melbourne, on the "HT Kildonian Castle" on the 8th of April 1919, returning as a duty nurse. Fanny Isabella Nicol died at Sale in 1956. Tower Farm was bought by Mr. Canute Hanson in 1922.

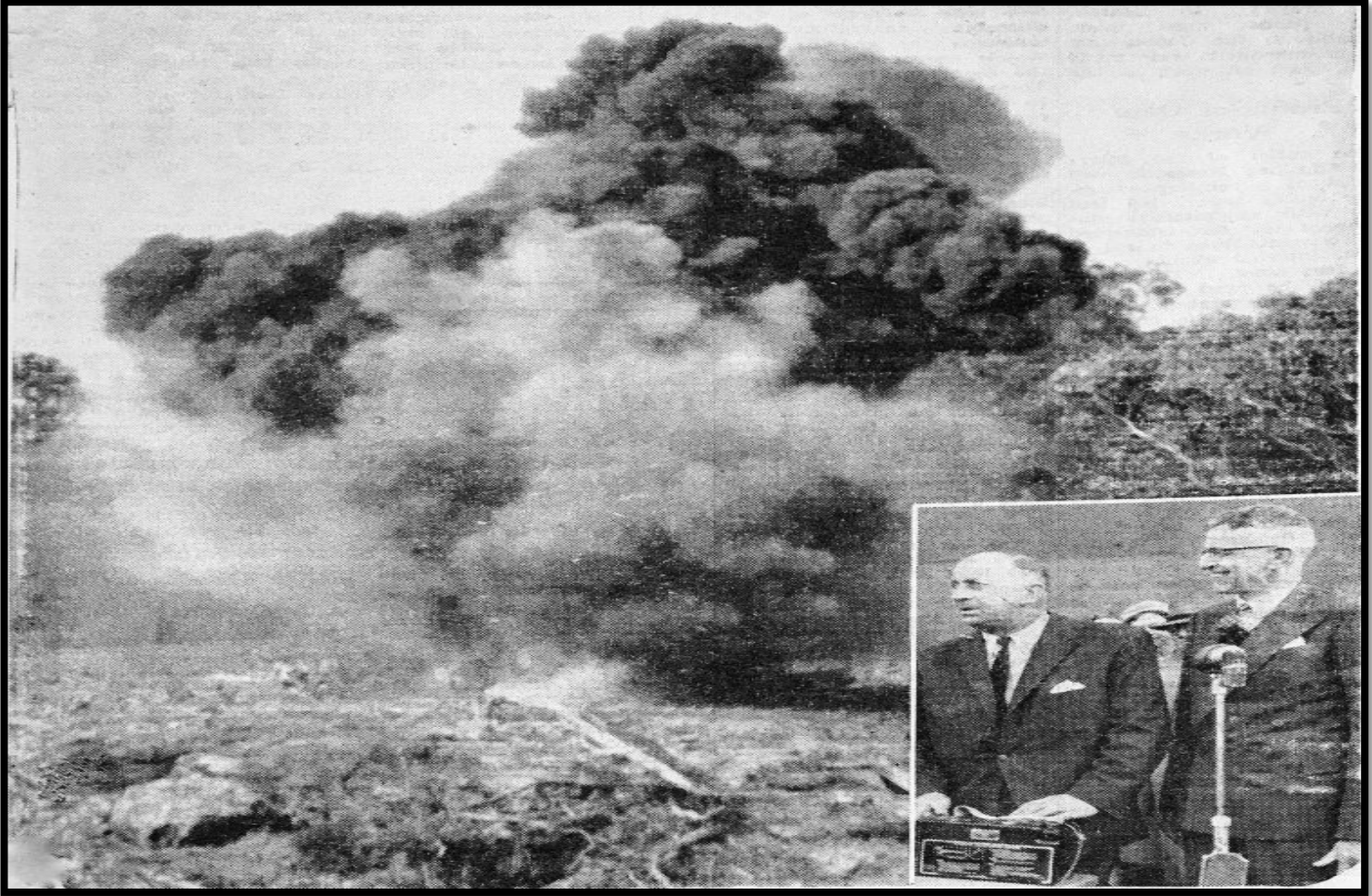


1960 CRICKET PREMIERS - DISTRICT UNITED

Back row; A. MEYENN, D. McCORMACK, R. DUPUY, D. COLLINS, H. ZEGELIN

Front row; G. HUNTER, V. SPEERS, A. WRIGHT, M. WRIGHT (c), F. GODDEN, G. LUCAS

June 1960 Start of Eppalock Reservoir



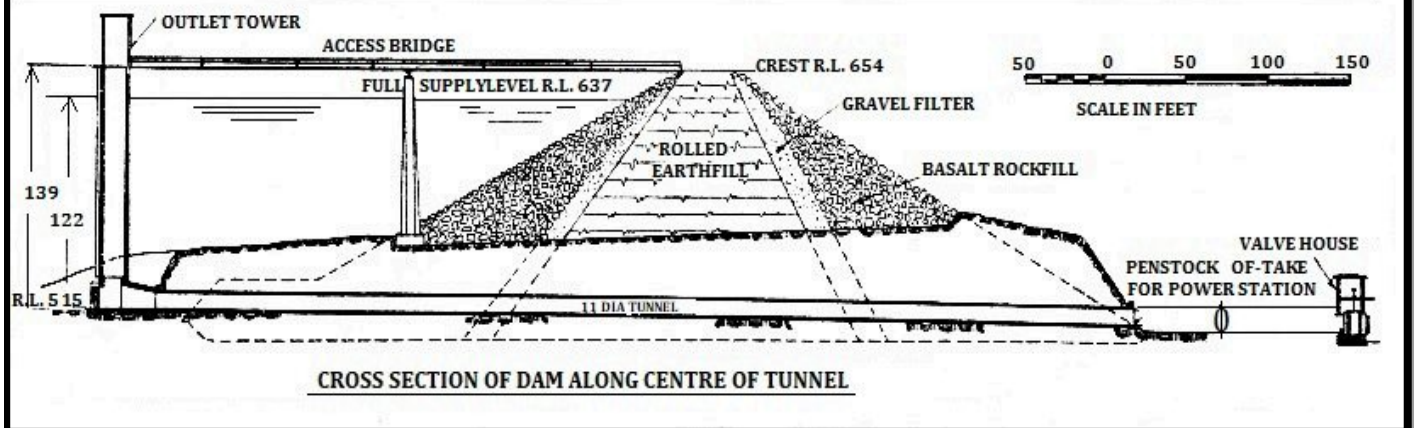
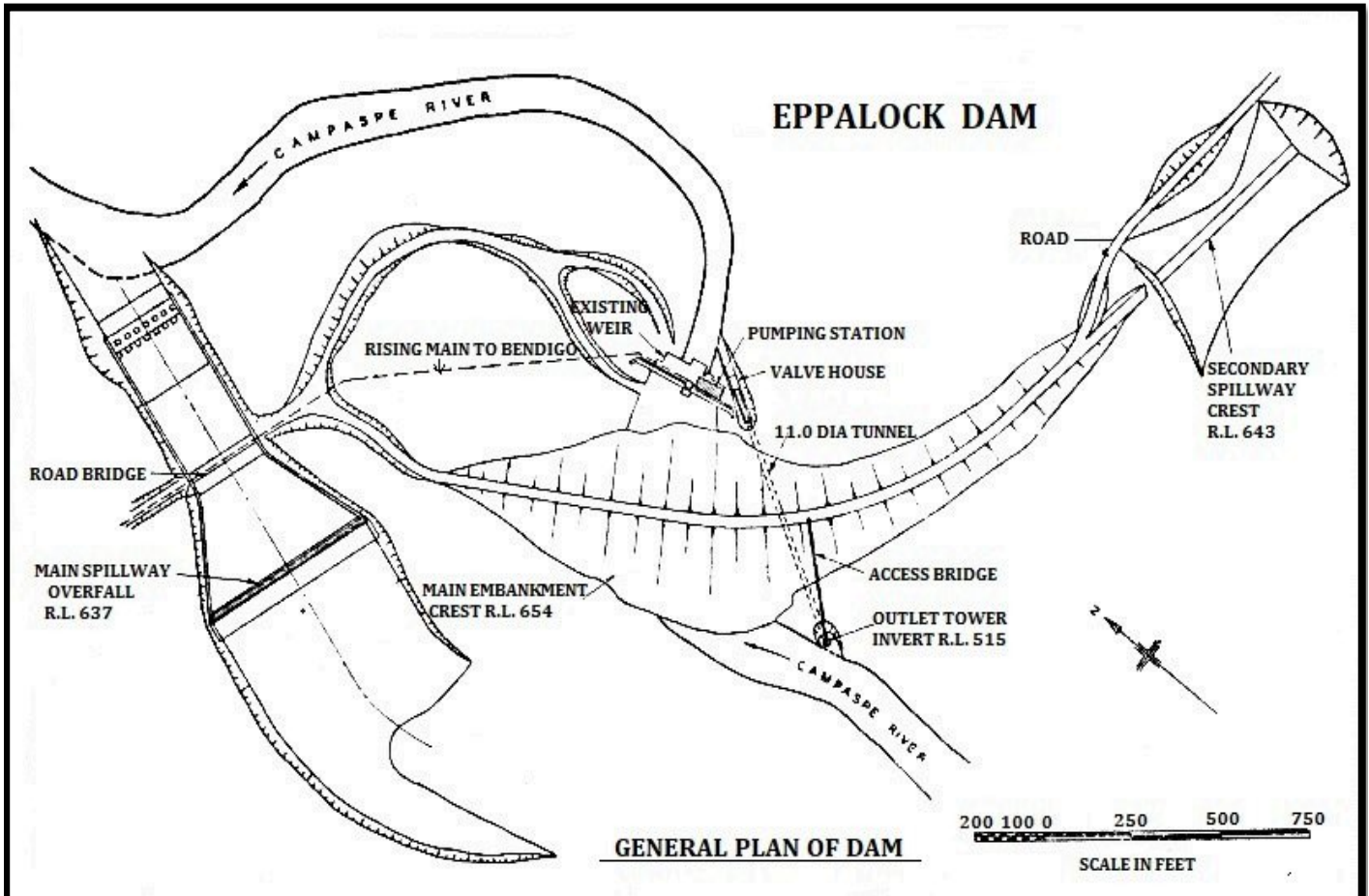
This could be an historic picture of a memorable happening, signalling a new era of prosperity for Bendigo and northern Victoria. This shattering blast which shook the countryside at Eppalock Weir on Thursday June 9th 1960 will resound in years to come with millions of pounds of wealth coming from the developed areas of the Campaspe Rivers pathway northward resulting from the benefits of the water which will be stored in the Eppalock Dam now about to be constructed. (Right hand corner) Premier of Victoria Mr Bolte is seen detonating the charge, with the acting chairman of the Water Commission Mr H.W. McCay at his side.

RESERVOIR DETAILS AT A GLANCE

Capacity.....250.000 acre feet	Length of Reservoir.....Approx 10 miles
Area submerged full supply...7,900 acres	Catchment area..... 820 square miles
Max depth of water at full supply 123 feet	Full Supply Level...637 feet above sea level
Type of structure.....earth & rock	Approx earth, gravel & rock..1,117,000 yd ³
Approx Concrete spillway,outlet 12,700 yd ³	Crest width of embankment35 feet
Crest level.....R.L. 654 feet	Length of main embankment.....2,300 feet
Main spillway length.....400 feet	Secondary spillway length A.....500 feet
Secondary spillway length B2,000 feet	Chute and Dissipator.....850 feet

Total cost of about 5,000,000 pounds, expected to be completed in winter of 1962

Plan of Eppalock Reservoir



Rochester and Lockington now featured on CARTALK AUSTRALIA a great tourist website. Please check out <http://www.cartalk.com.au/museums-in-northern-victoria.html>

President	Lorraine Haines 03 54842556	Email haineslorraine6@gmail.com
Vice-President	Kaye Speers 03 54841660	Email mervyn.wild@bigpond.com
Secretary	John Foster 03 54842233 / 0409842233	Email j-foster@bigpond.com
Treasurer	Janine Watson 03 54849251	Email jandoug.watson@yahoo.com

Open 9am to 12 noon every Wednesday and Friday. Other times by appointment. Admission \$5

The Rochester Historical & Pioneer Society has a new website: <http://www.rochesterhistoricalsociety.com.au>